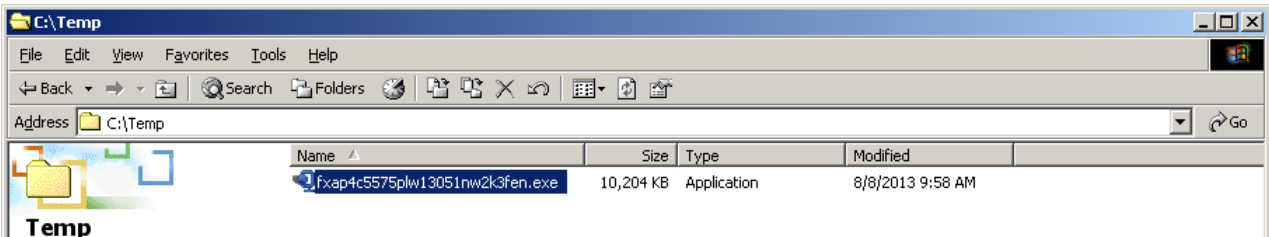


This document describes how to install printer driver on Windows® 2000 from “Add Printer”.

- 1) You can download the latest driver from our web site.

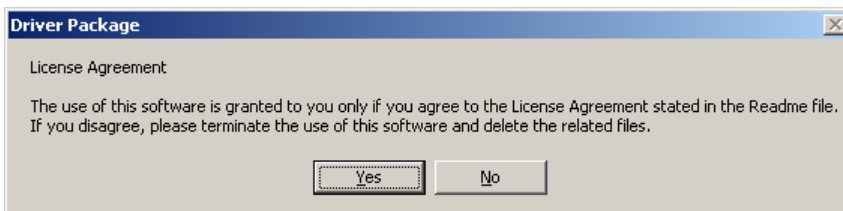
You will download the driver to C:\Temp in this document.



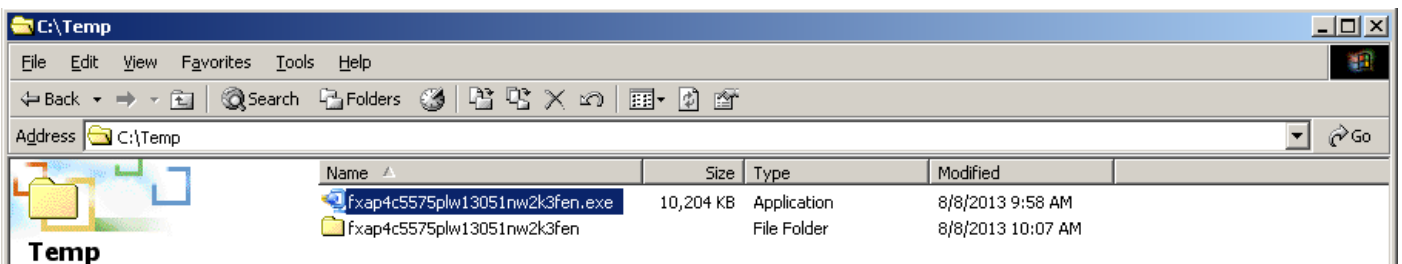
- 2) Double-click the downloaded compressed file to decompress.

When decompressing, License Agreement is displayed. Click “Yes” to continue.

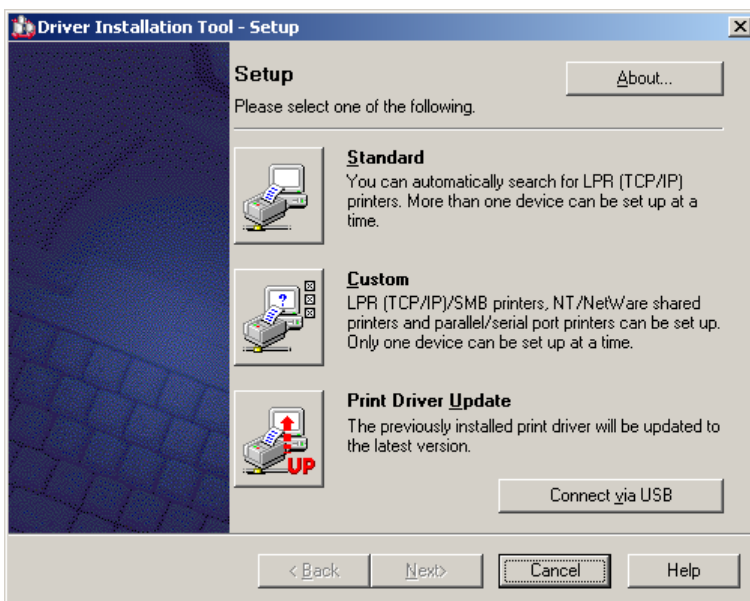
Depending on the downloaded file, License Agreement may not be displayed.



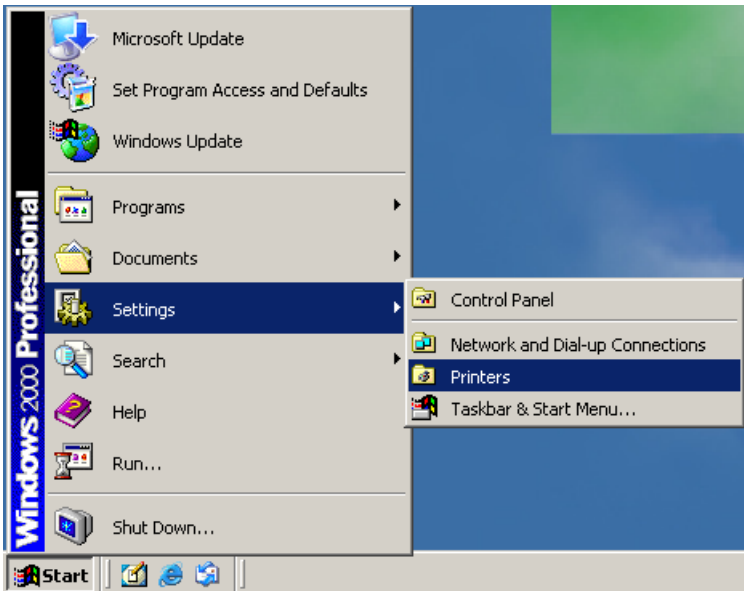
The file will be decompressed into the same location as the downloaded file.



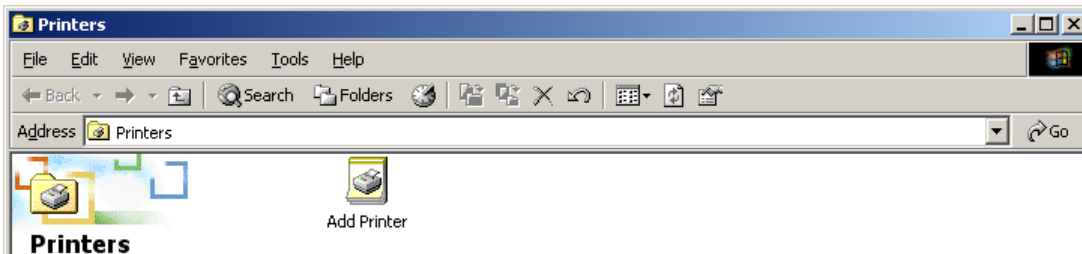
- 3) Driver Installation Tool is displayed automatically. To install the driver from “Add Printer”, click “Cancel” and close the Driver Installation Tool. Depending on the downloaded file, Driver Installation Tool may not be supported.



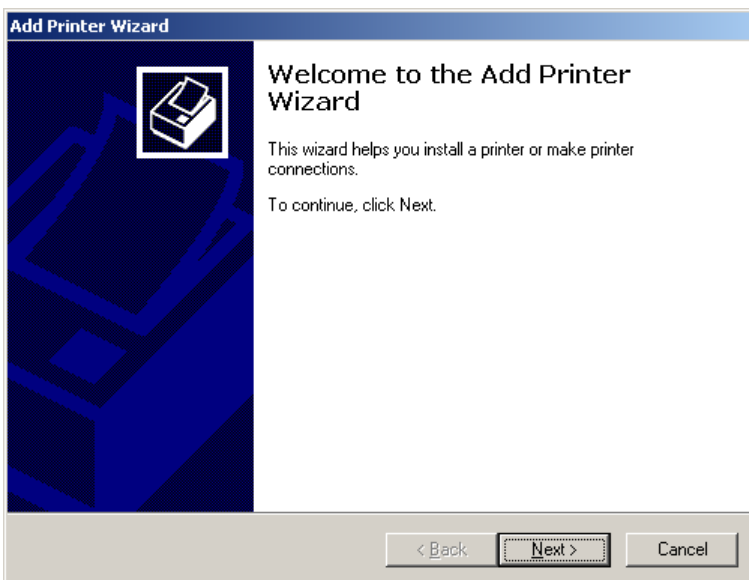
4) Click the "Start" button. Point to "Settings" and click "Printers".



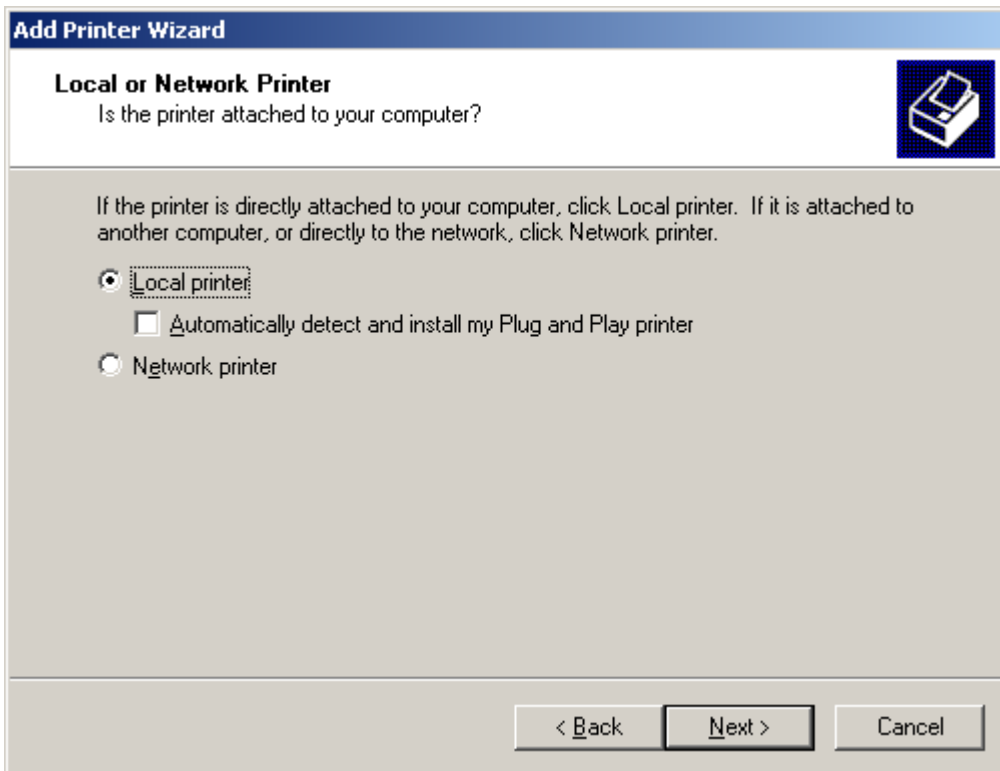
5) Double-click the "Add Printer" icon.



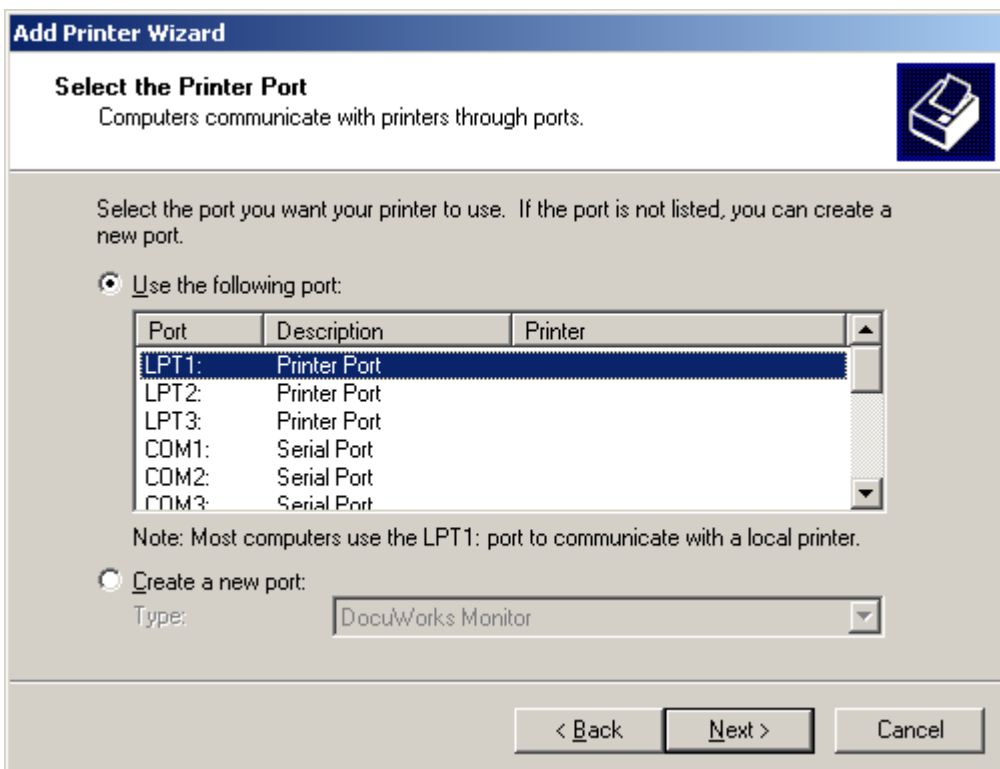
6) "Add Printer Wizard" is displayed. Click "Next".



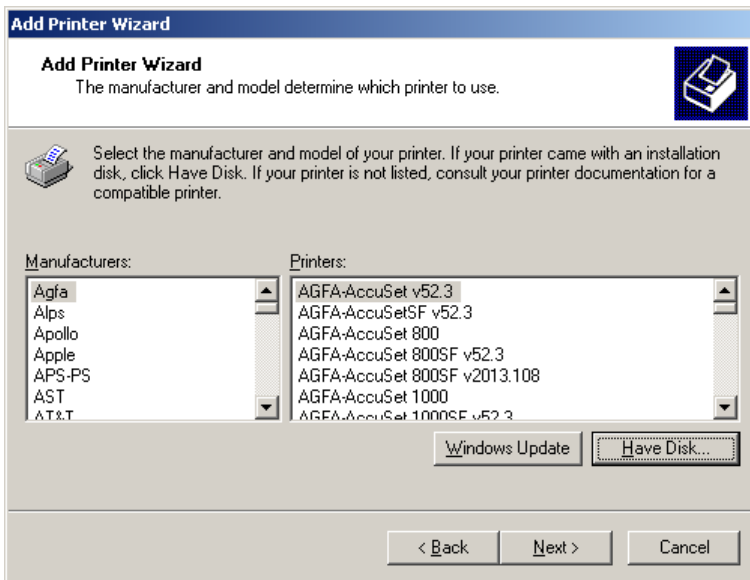
7) Select the type of printer to use and click “Next”.



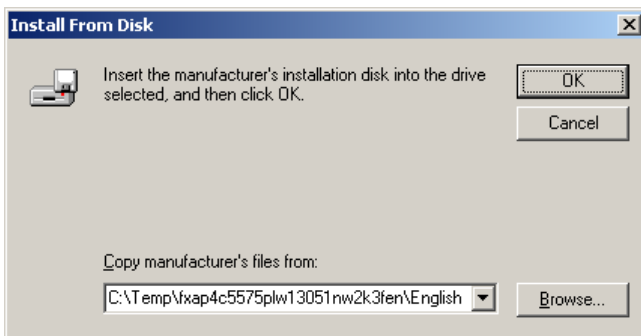
8) If “Local printer” was specified in the step 7), this pane is displayed. Select the port to use, click “Next”.



9) Click "Have Disk".



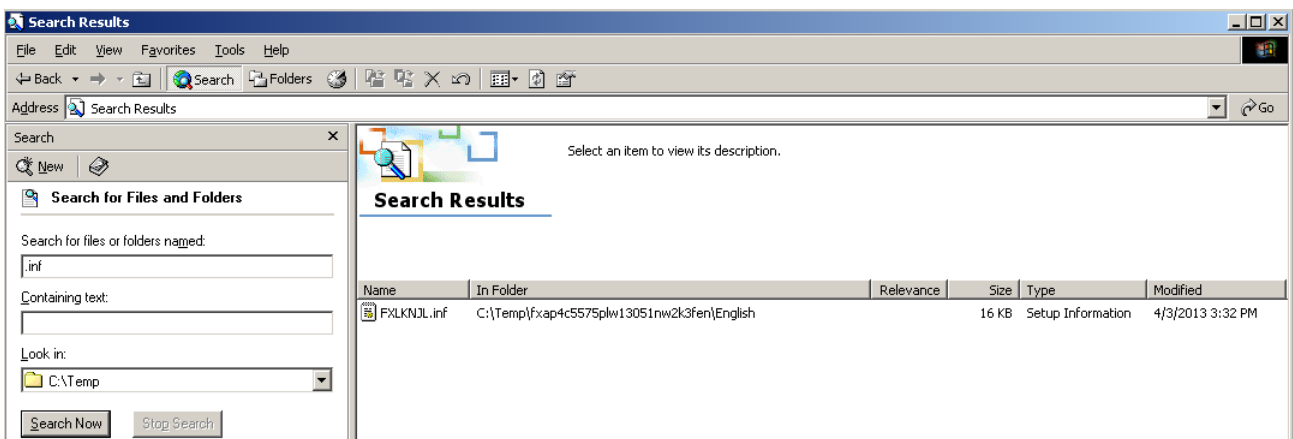
10) Specify the directory containing the uncompressed files in previous step in the "Copy manufacturer's files from" box. Click "OK".



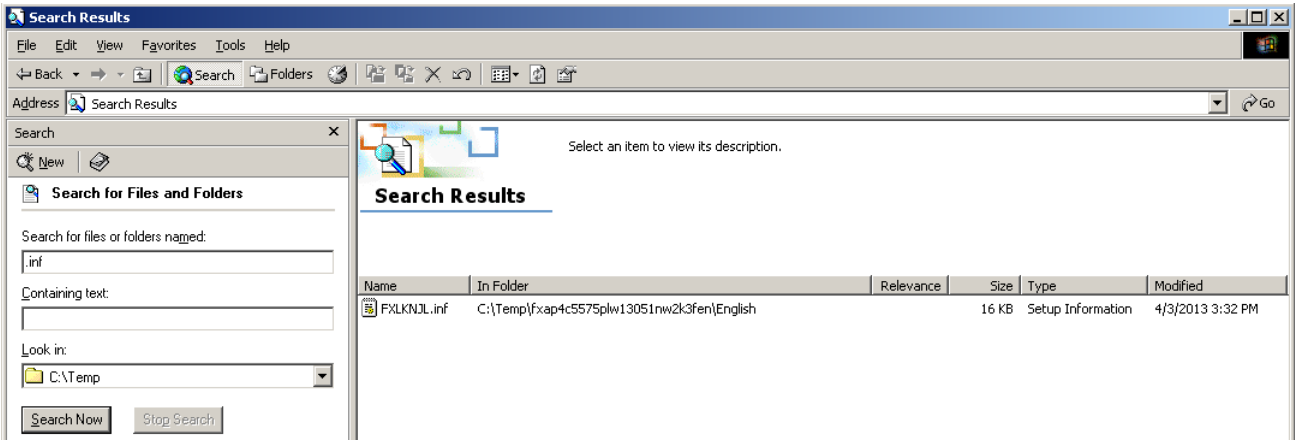
The way to search reference is as follows.

Show the location where uncompressed files are saved (c:\Temp) and select "Search".

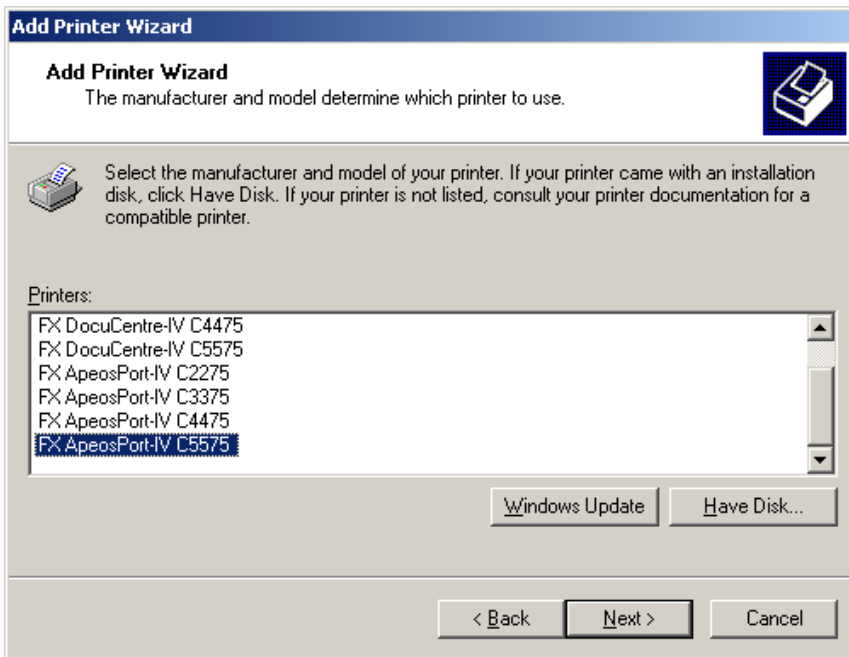
Input ".inf" in the text box, "Search for files or folders named", and then click "Search Now".



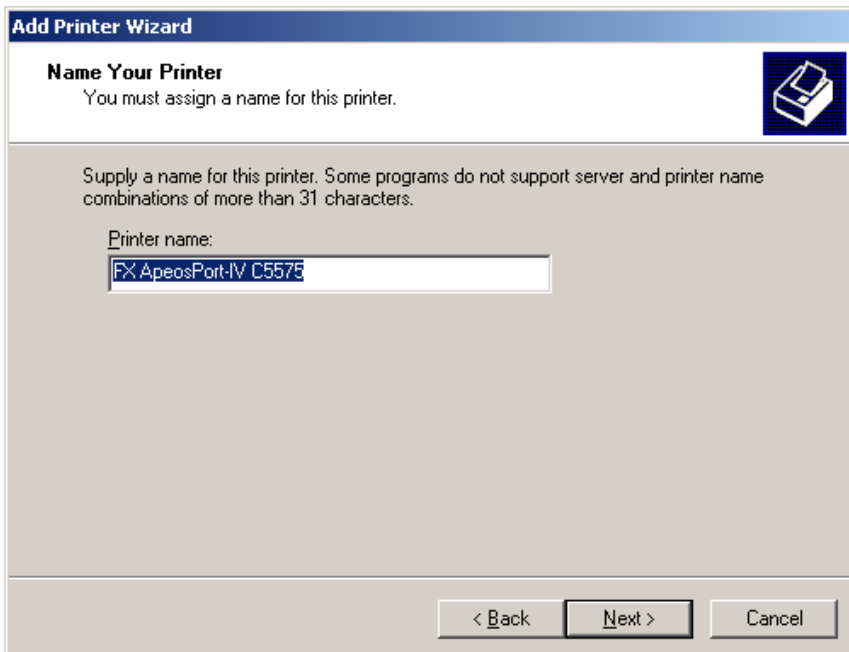
The location shown in “In Folder” on the “Search Results” window is where inf file is saved.



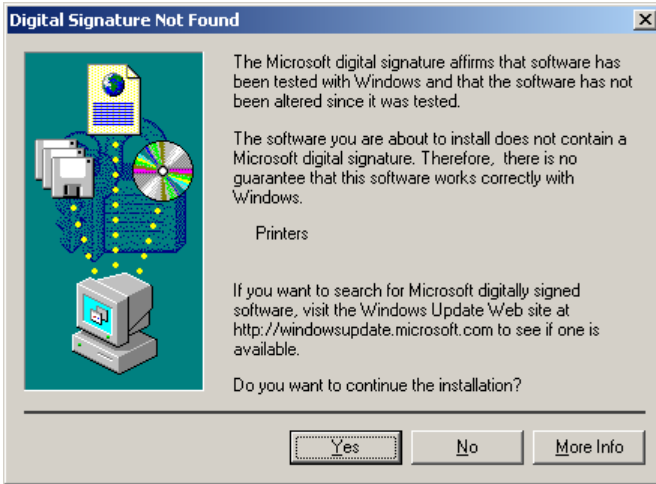
11) Select the correct print driver, and click “Next”.



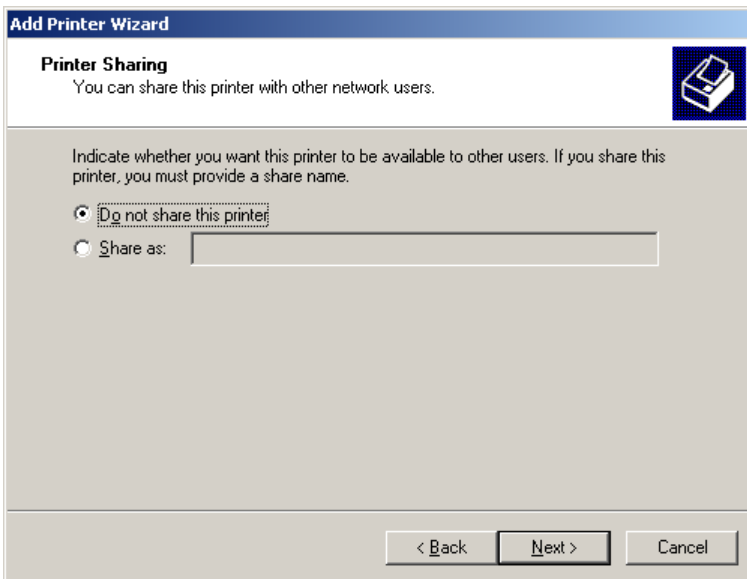
12) A dialog box for specifying the printer name is displayed. To change the printer name, enter any name in the "Printer name" box.



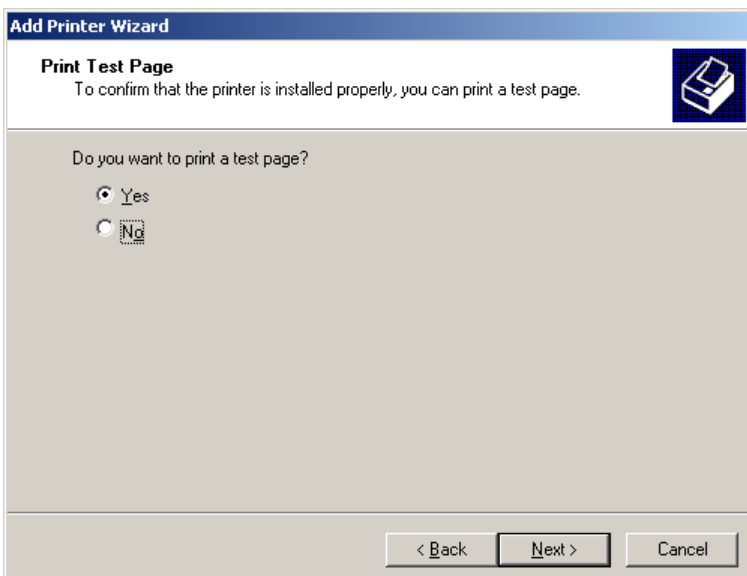
- 13) A message about the Electronic Signature cannot be found will be displayed but this does not cause functional problem. Click "Yes".



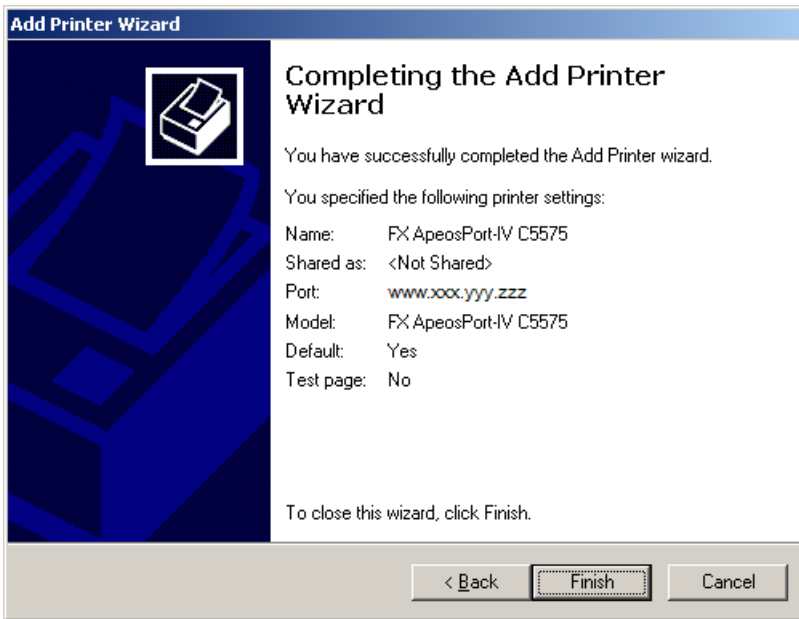
- 14) Specify whether to share this printer with other network users. Make sharing settings in this dialog and click "Next".



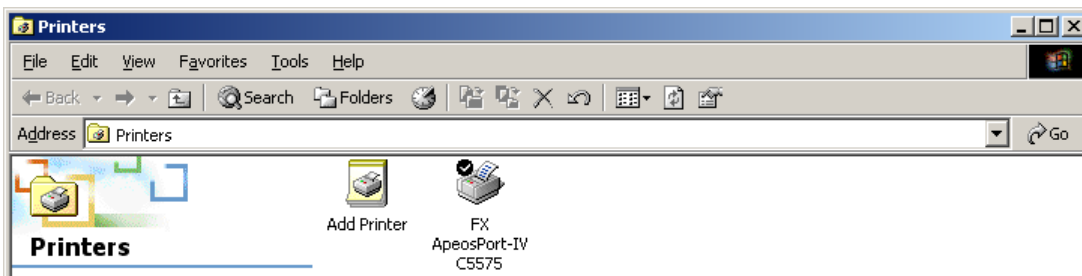
- 15) Load paper to the printer, select "Yes" and then "Next". Select "No" and click "Next" if you do not wish to print the test page.



16) A dialog box to confirm the settings is displayed. Click "Finish" after confirming the settings.



17) A new icon is displayed in the "Printers" folder.



This is the end of the installation.